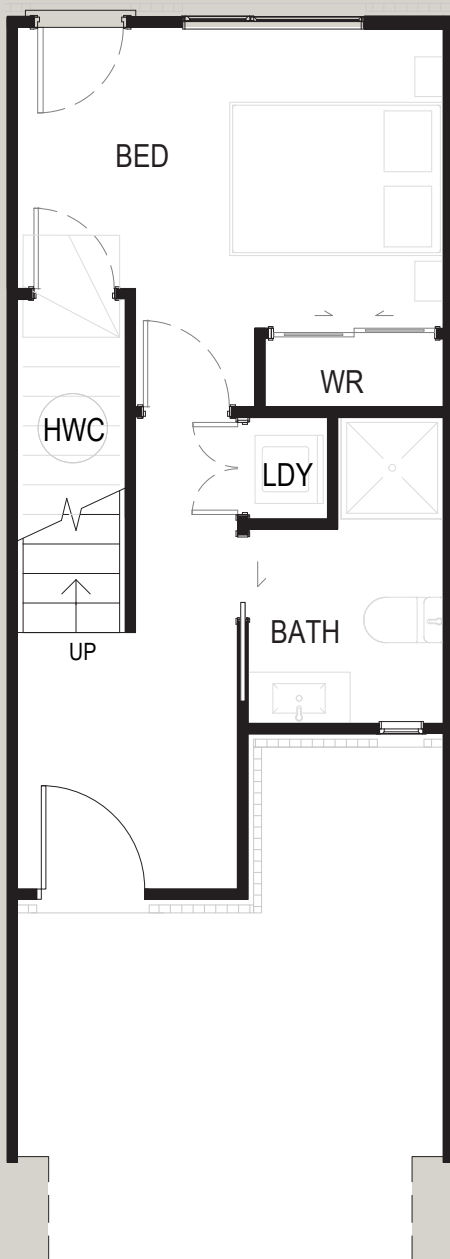
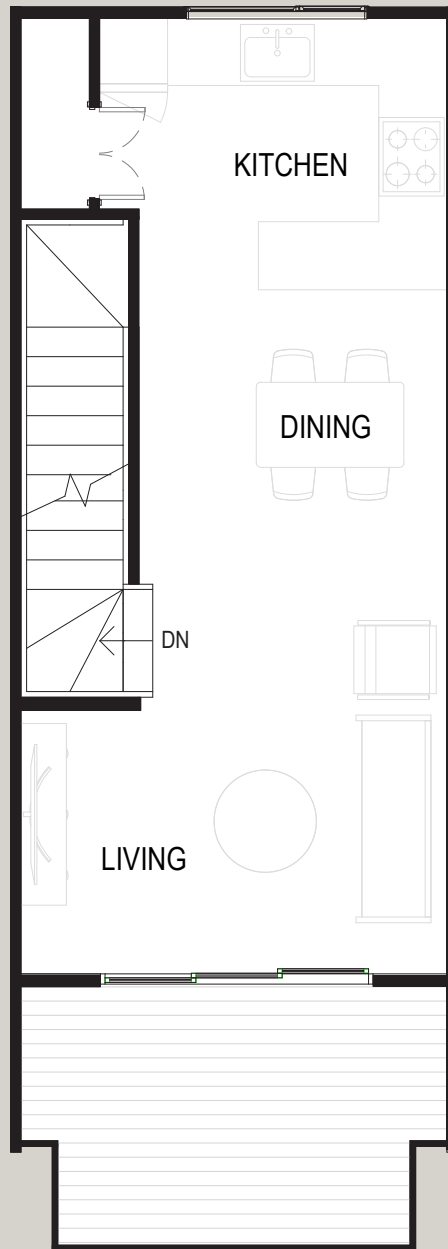


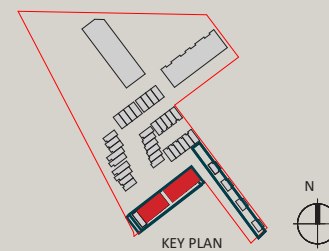
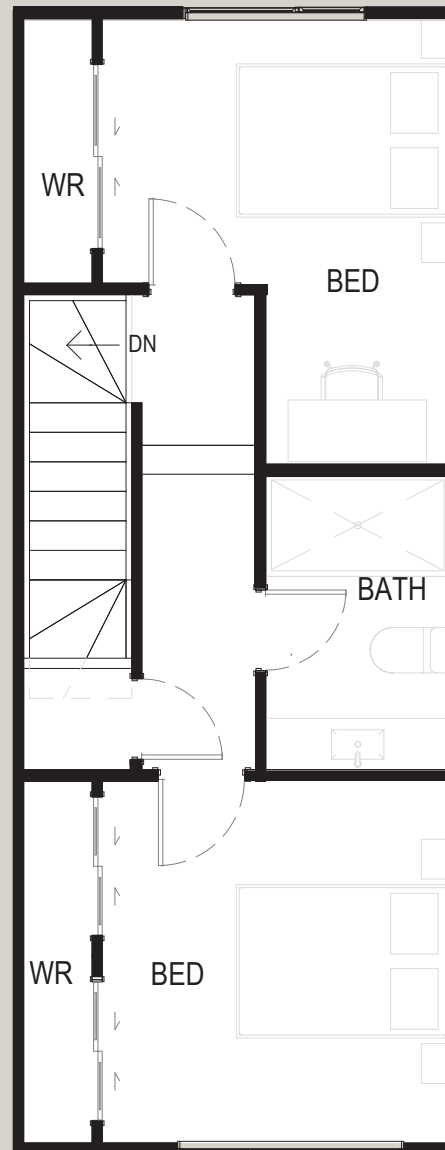
Ground Floor



First Floor



Second Floor



## TYPE C

### 3 Bedroom Residence

Unit 5  
105.5m<sup>2</sup> Internal + 8.8m<sup>2</sup> Deck  
Lot size - 65m<sup>2</sup>

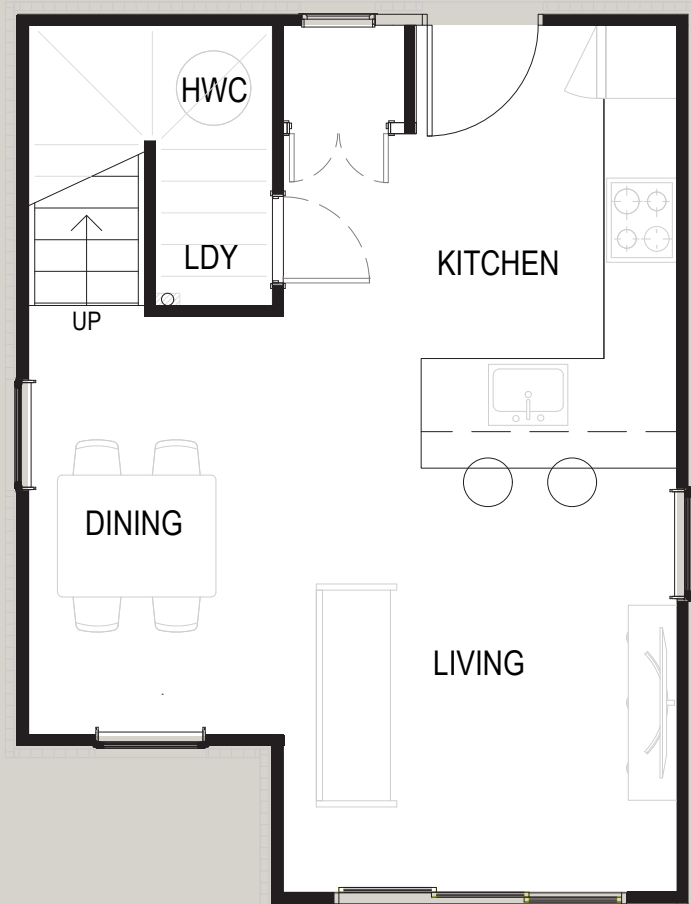
Units 6-9, 12-15  
106.6m<sup>2</sup> Internal + 9m<sup>2</sup> Deck  
Lot size - 61m<sup>2</sup>

Units 10,11  
107m<sup>2</sup> Internal + 9m<sup>2</sup> Deck  
Lot size - 83m<sup>2</sup>

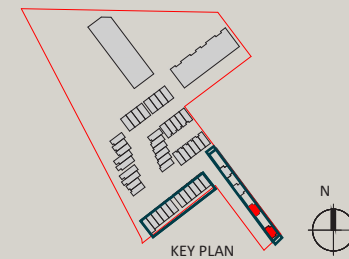
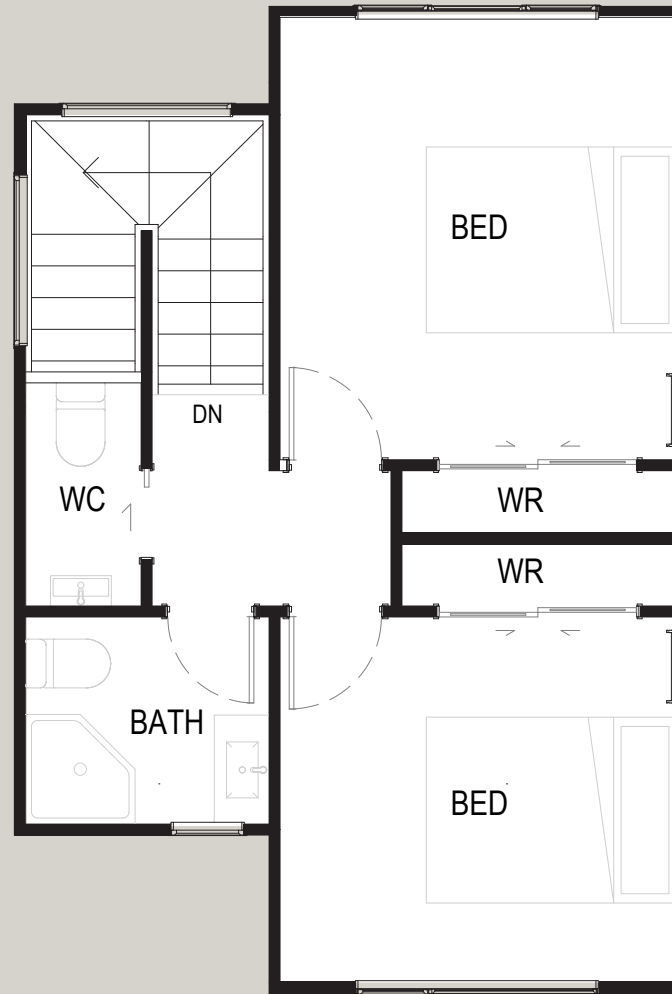
[theridgeresidences.co.nz](http://theridgeresidences.co.nz)

Disclaimer: Variations to, or adjustments from the specifications (including substitutions for any materials which may not be available) may be made by the Vendor in the course of construction of the works, provided that the substitutions, variations or departures do not make any appreciable reduction in or have any material adverse effect on the value, appearance or usefulness of the completed unit.

Ground Floor



First Floor



## TYPE D 2 Bedroom Residence

Units 1 & 2

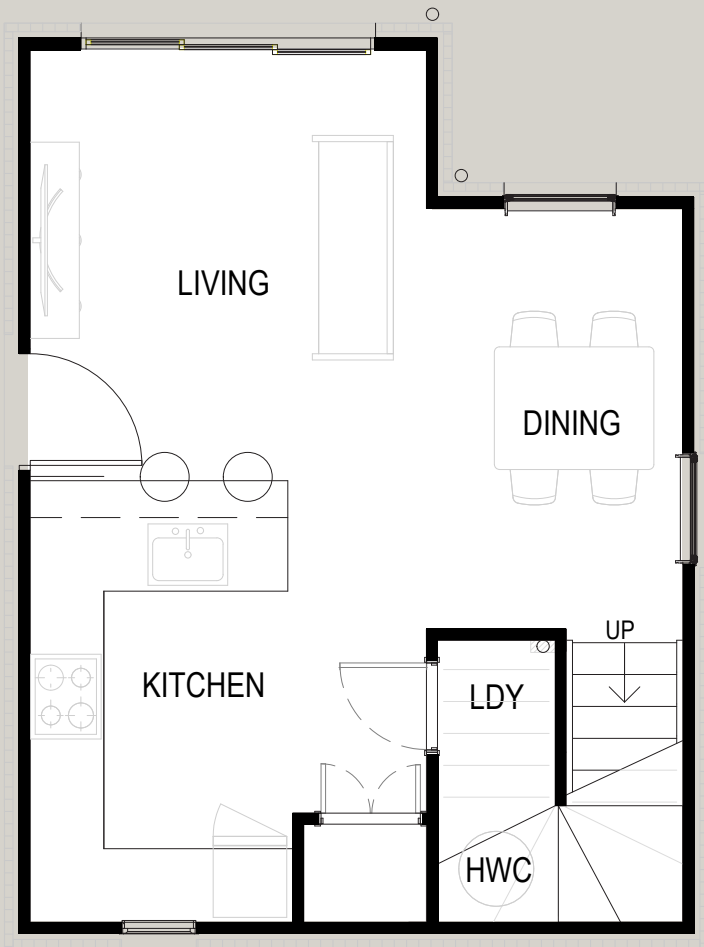
Unit 1  
Internal - 81.8m<sup>2</sup>  
Lot Size - 126m<sup>2</sup>

Unit 2  
Internal - 81.8m<sup>2</sup>  
Lot Size - 109m<sup>2</sup>

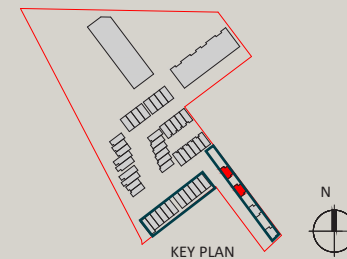
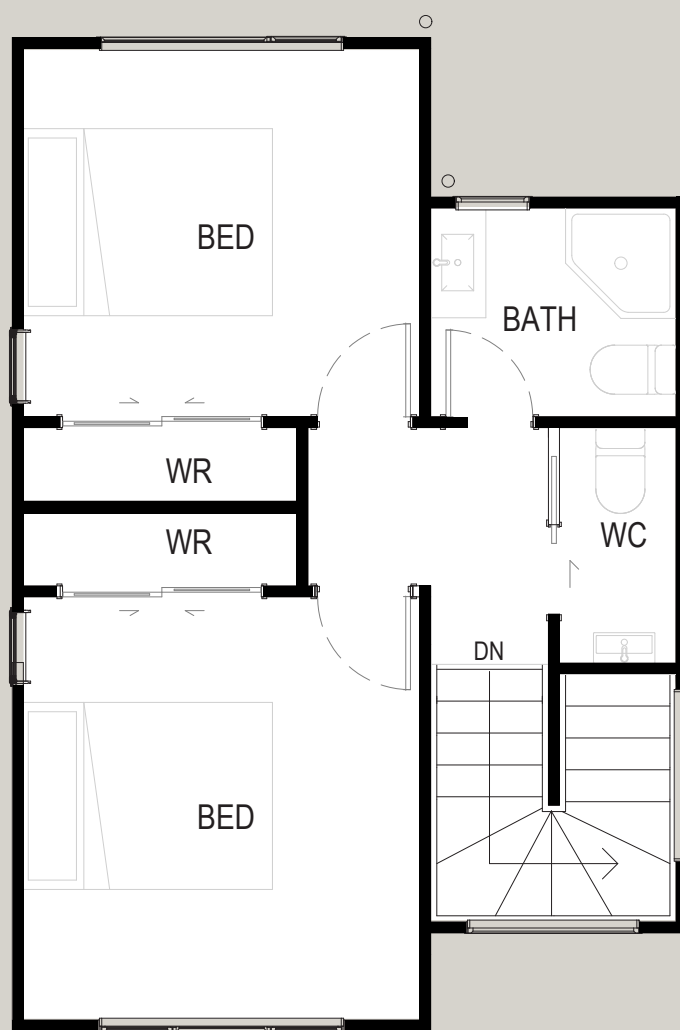
[theridgeresidences.co.nz](http://theridgeresidences.co.nz)

Disclaimer: Variations to, or adjustments from the specifications (including substitutions for any materials which may not be available) may be made by the Vendor in the course of construction of the works, provided that the substitutions, variations or departures do not make any appreciable reduction in or have any material adverse effect on the value, appearance or usefulness of the completed unit.

Ground Floor



First Floor



## TYPE D1 2 Bedroom Residence

Units 3 & 4

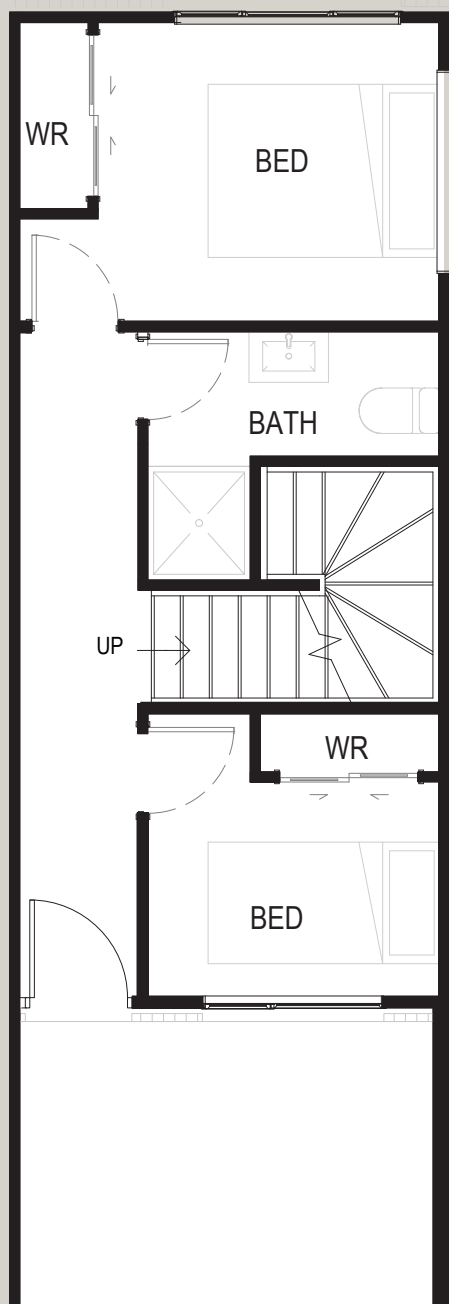
Internal 81.8m<sup>2</sup>

Lot size 109m<sup>2</sup>

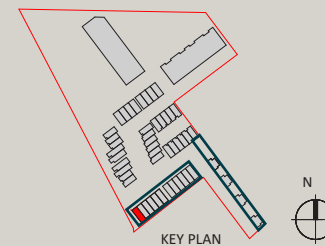
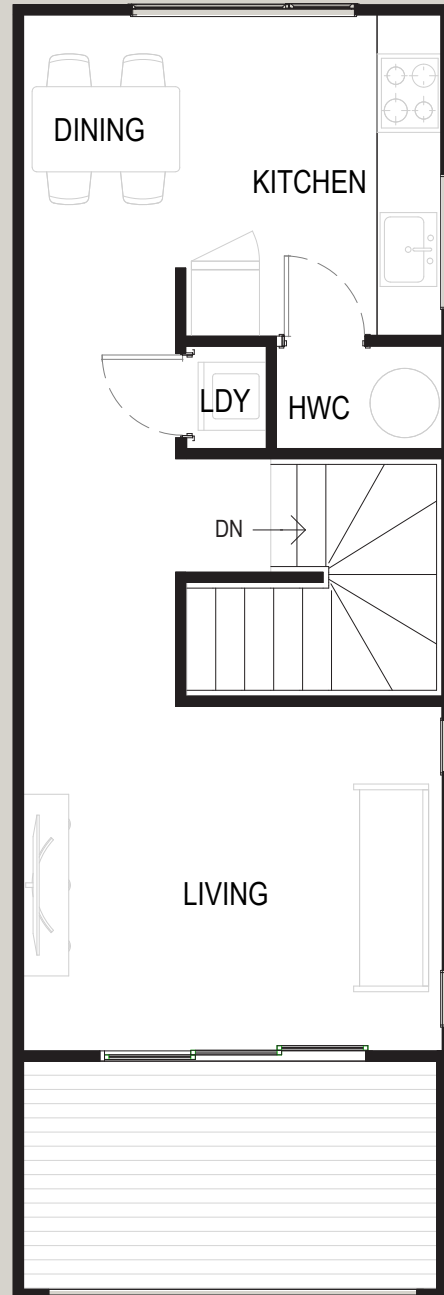
[theridgeresidences.co.nz](http://theridgeresidences.co.nz)

Disclaimer: Variations to, or adjustments from the specifications (including substitutions for any materials which may not be available) may be made by the Vendor in the course of construction of the works, provided that the substitutions, variations or departures do not make any appreciable reduction in or have any material adverse effect on the value, appearance or usefulness of the completed unit.

Ground Floor



First Floor



**TYPE E**  
**2 Bedroom Residence**

Unit 16

Internal 74.9m<sup>2</sup> + Deck 8.5m<sup>2</sup>

Lot size 72m<sup>2</sup>

[theridgeresidences.co.nz](http://theridgeresidences.co.nz)

Disclaimer: Variations to, or adjustments from the specifications (including substitutions for any materials which may not be available) may be made by the Vendor in the course of construction of the works, provided that the substitutions, variations or departures do not make any appreciable reduction in or have any material adverse effect on the value, appearance or usefulness of the completed unit.