

Floor Plans - Type A | 77m2

2 Bedroom
2 Bathroom
1 Carpark

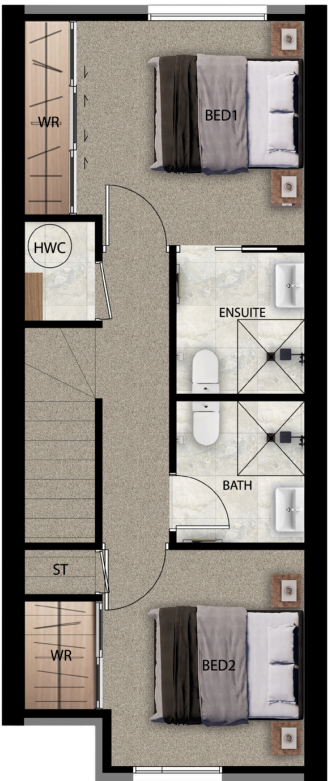
Lot 36-40



Floor Plans - Type A1 | 76m2

2 Bedroom
2 Bathroom
1 or 2 Carparks

Lot 1-4, 14-18

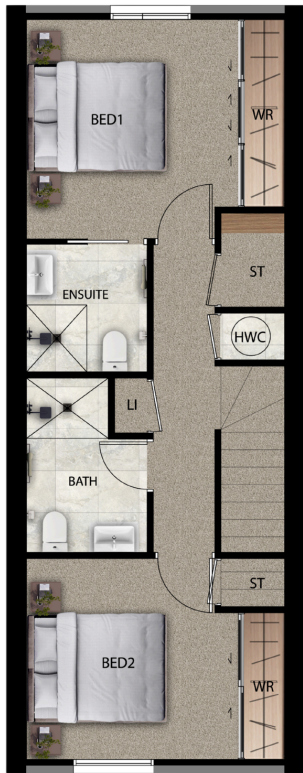


Disclaimer: Variations to, or adjustments from the specifications (including substitutions for any materials which may not be available) may be made by the Vendor in the course of construction of the works, provided that the substitutions, variations or departures do not make any appreciable reduction in or have any material adverse effect on the value, appearance or usefulness of the completed unit.

Floor Plans - Type A2 | 89m2

2 Bedroom
2 Bathroom
2 Carparks

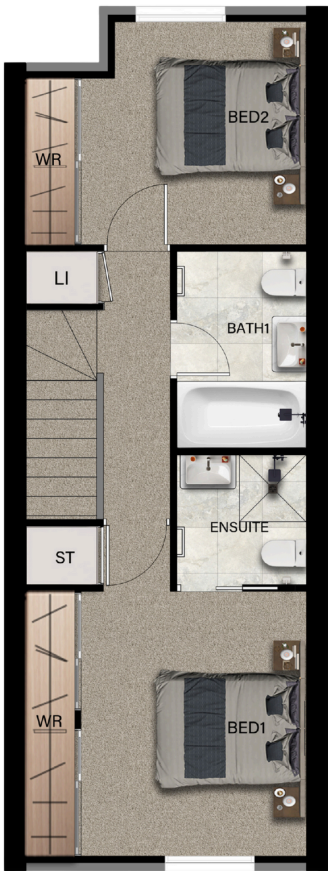
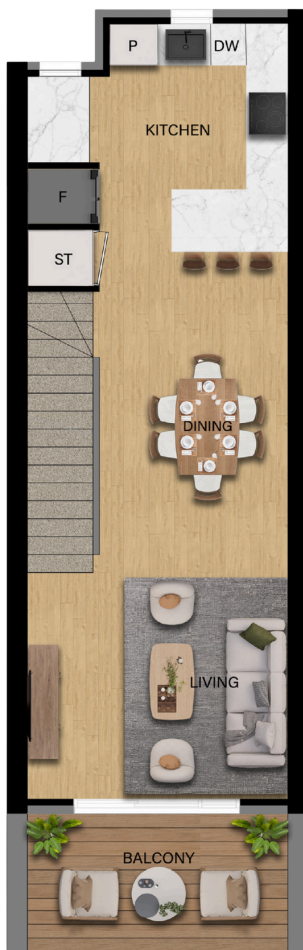
Lot 29-35



Floor Plans - Type B | 132m2

3 Bedroom
3 Bathroom
1 Garage
1 Carpark

Lot 7, 8, 10, 11



Disclaimer: Variations to, or adjustments from the specifications (including substitutions for any materials which may not be available) may be made by the Vendor in the course of construction of the works, provided that the substitutions, variations or departures do not make any appreciable reduction in or have any material adverse effect on the value, appearance or usefulness of the completed unit.

Floor Plans - Type C1 | 97m2

3 Bedroom
2 Bathroom
2 Carparks

Lot 5, 6, 9, 12, 13



Floor Plans - Type D | 88m2

2 Bedroom
1.5 Bathroom
2 Carpark

Lot 24-28



Disclaimer: Variations to, or adjustments from the specifications (including substitutions for any materials which may not be available) may be made by the Vendor in the course of construction of the works, provided that the substitutions, variations or departures do not make any appreciable reduction in or have any material adverse effect on the value, appearance or usefulness of the completed unit.

Floor Plans - Type E | 105m2

- 2 Bedroom
- 1 Flexi Room
- 1.5 Bathroom
- 1 Garage
- 1 Carpark

Lot 19-23



Disclaimer: Variations to, or adjustments from the specifications (including substitutions for any materials which may not be available) may be made by the Vendor in the course of construction of the works, provided that the substitutions, variations or departures do not make any appreciable reduction in or have any material adverse effect on the value, appearance or usefulness of the completed unit.



Artist impression only