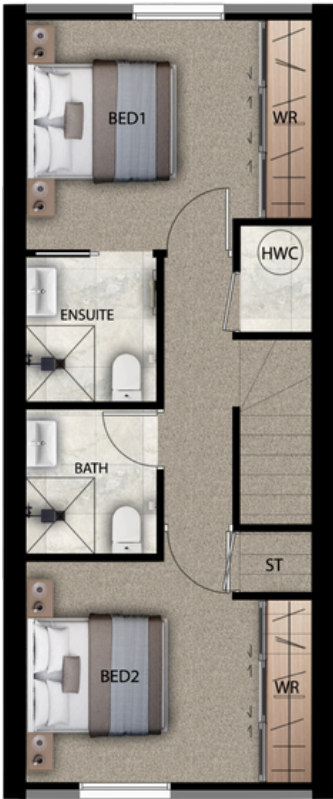


Floor Plans - Type A | 77m2

2 Bedroom
2 Bathroom
1 Carpark

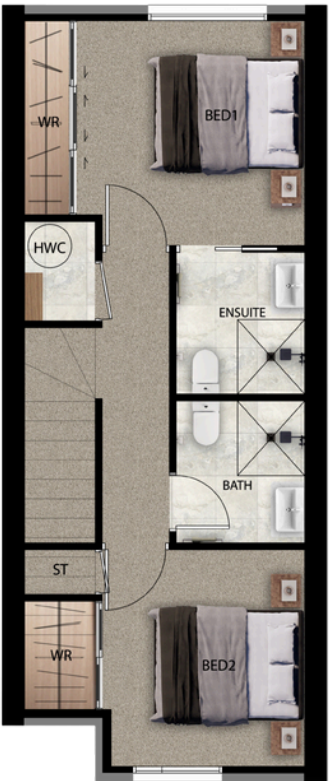
Lot 36-40



Floor Plans - Type A1 | 76m2

2 Bedroom
2 Bathroom
1 or 2 Carparks

Lot 2-3, 15-17

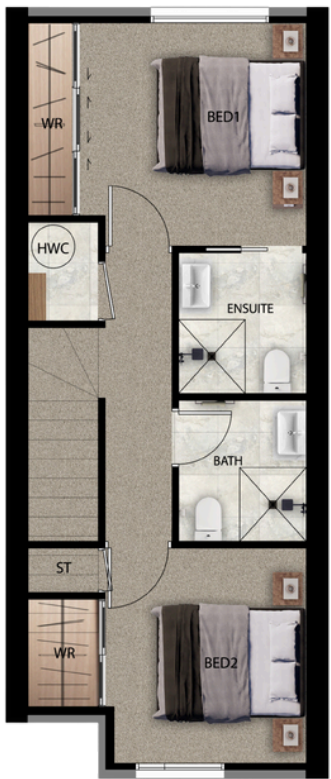


Disclaimer: Variations to, or adjustments from the specifications (including substitutions for any materials which may not be available) may be made by the Vendor in the course of construction of the works, provided that the substitutions, variations or departures do not make any appreciable reduction in or have any material adverse effect on the value, appearance or usefulness of the completed unit.

Floor Plans - Type A1 | 76m2

2 Bedroom
2 Bathroom
1 or 2 Carparks

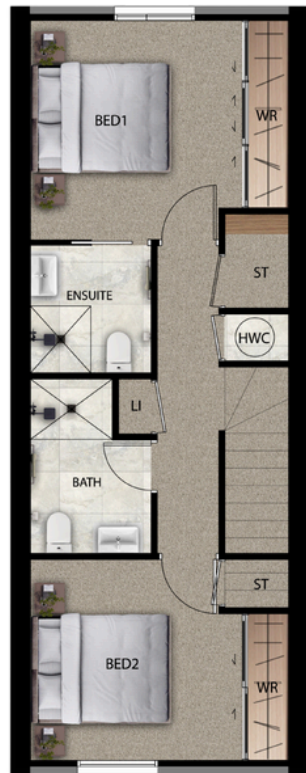
Lot 1, 4, 14, 18



Floor Plans - Type A2 | 89m2

2 Bedroom
2 Bathroom
2 Carparks

Lot 29-35



Disclaimer: Variations to, or adjustments from the specifications (including substitutions for any materials which may not be available) may be made by the Vendor in the course of construction of the works, provided that the substitutions, variations or departures do not make any appreciable reduction in or have any material adverse effect on the value, appearance or usefulness of the completed unit.

Floor Plans - Type B | 132m2

3 Bedroom
3 Bathroom
1 Garage
1 Carpark

Lot 7, 8, 10, 11



Floor Plans - Type C1 | 97m2

3 Bedroom
2 Bathroom
2 Carparks

Lot 5, 6, 9, 12, 13



Disclaimer: Variations to, or adjustments from the specifications (including substitutions for any materials which may not be available) may be made by the Vendor in the course of construction of the works, provided that the substitutions, variations or departures do not make any appreciable reduction in or have any material adverse effect on the value, appearance or usefulness of the completed unit.

Floor Plans - Type D | 88m2

2 Bedroom
1.5 Bathroom
2 Carpark

Lot 24-28



Floor Plans - Type E | 105m2

2 Bedroom
1 Flexi Room
1.5 Bathroom
1 Garage
1 Carpark

Lot 19-23



Disclaimer: Variations to, or adjustments from the specifications (including substitutions for any materials which may not be available) may be made by the Vendor in the course of construction of the works, provided that the substitutions, variations or departures do not make any appreciable reduction in or have any material adverse effect on the value, appearance or usefulness of the completed unit.

Optional Extras and Upgrades

Customise Your New Home

Along with our quality base specifications, we offer a range of optional extras and upgrades so you can add personal touches that make your home your own, we'll help you create a home that suits your style and needs.

Upgrade Option	Base Spec	Price incl GST
Kitchen		
LED Bar Pendant to Breakfast Bar <i>(Type A2, B, D, C1 only)</i>	-	\$500
LED Strip Lights to Kitchen Cabinetry	-	\$850
Fridge Water Feed	-	\$150
Appliances*		
Fisher & Paykel Washer 8kg	-	\$1,100
Fisher & Paykel Dryer 8kg	-	\$1,100
Fisher & Paykel Washer 8kg Dryer 5.5kg Combo	-	\$1,600
Fisher & Paykel Induction Hob	Ceramic Hob	\$900
Heating/Cooling Upgrades		
Additional Heat Pump to 1 Bedroom	1x in Living Room	\$3,200
Additional Heat Pump to 2 Bedrooms	1x in Living Room	\$4,000
Additional Heat Pump to 3 Bedrooms	1x in Living Room	\$5,500
Ceiling Fans to 1 Bedroom	-	\$650
Ceiling Fans to 2 Bedrooms	-	\$1,300
Ceiling Fans to 3 Bedrooms	-	\$1,950
Miscellaneous		
Attic Stairs <i>Subject to ceiling space being available</i>	Ceiling Hatch	\$2,300
10 Year Builders Guarantee	-	\$1,700

**All appliances (excluding the induction hob upgrade) are SUPPLY ONLY and will be delivered to the ground floor of your new home. It is the owner's responsibility to arrange installation.*

Colour Scheme Options

Hatfields Beach

A light color palette featuring soft tones, complemented by oak kitchen and vanity cabinetry, neutral carpet and brushed stainless steel fixtures.



Nukumea Stream

A rich color scheme showcasing deep, moody hues, enhanced by gunmetal fixtures, black kitchen and vanity cabinetry, and grey carpeting.



Disclaimer: Variations to, or adjustments from the specifications (including substitutions for any materials which may not be available) may be made by the Vendor in the course of construction of the works, provided that the substitutions, variations or departures do not make any appreciable reduction in or have any material adverse effect on the value, appearance or usefulness of the completed unit.